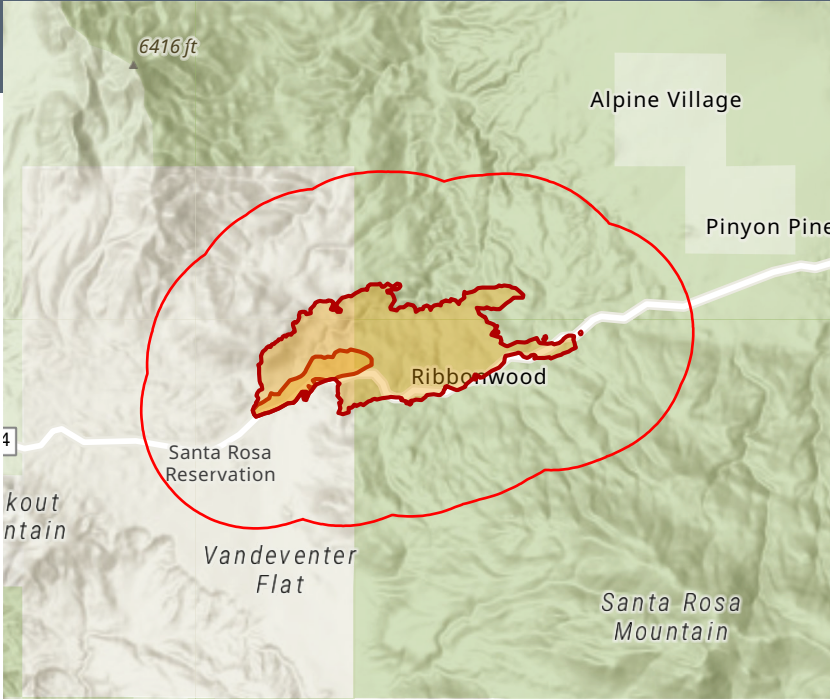




Rosa Incident



Year Structure Built	
Built: 2020/Later	0
Year Built: 2010-2019	0
Year Built: 2000-2009	9
Year Built: 1990-1999	4
Year Built: 1980-1989	8
Year Built: 1970-1979	7
Year Built: 1960-1969	2
Year Built: 1950-1959	2
Year Built: 1940-1949	0
Year Built: 1939 or Earlier	5

2018-2022 Heating Fuel	
Utility Gas	2
Tank/LP Gas	7
Electricity	13
Oil/Kerosene	0
Coal/Coke	0
Wood	5
Solar Energy	0
Other Fuel	0
No Fuel	2

124

Population

32

Total Households

3.88

Avg Size of Household

10.2%

Unemployment Rate

50.0

Median Age

94

Household Has Internet Access

24

Household Owns Computer

Workforce

96

Daytime Population

2

Number of Veterans

1

Total Businesses

5

Total Employees

34

White Collar Workers

6

Blue Collar Workers

13

Service Workers

At Risk Population



12

Households With Disability



31

Population 65+



2

Households Without Vehicle



School Enrollment

0

Nursery & Preschool

0

Kindergarten

0

Grade 1-4

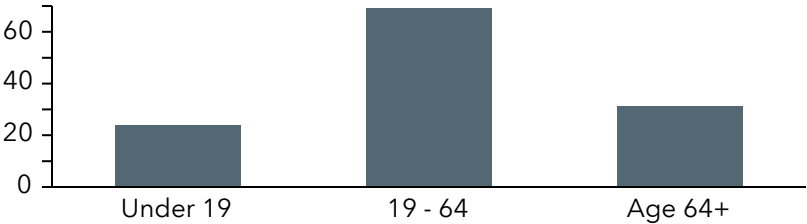
0

Grade 5-8

1

Grade 9-12

Population By Age



Language Spoken	Age 5-17	18-64	Age 65+	Total
English Only	1	48	18	67
Spanish	0	14	5	19
Spanish & English Well	0	6	0	6
Spanish & English Not Well	0	0	2	2
Spanish & No English	0	8	4	12
Indo-European	0	0	0	0
Indo-European & English Well	0	0	0	0
Indo-European & English Not Well	0	0	0	0
Indo-European & No English	0	0	0	0
Asian-Pacific Island	0	9	0	9
Asian-Pacific Isl & English Well	0	2	0	2
Asian-Pacific Isl & English Not Well	0	7	0	7
Asian-Pacific Isl & No English	0	0	0	0
Other Language	0	0	0	0
Other Language & English Well	0	0	0	0
Other Language & English Not Well	0	0	0	0
Other Language & No English	0	0	0	0